

GOD'S *NOT* DEAD

Newsletters

Daniel Bashta
Rodger Clutter

♩ = 130

mp

Measures 1-4: Treble clef contains eighth-note chords. Bass clef has a whole note chord in measures 3 and 4.

5

f

Measures 5-7: Treble clef contains eighth-note chords. Bass clef contains eighth-note chords.

8

mf

Measures 8-9: Treble clef contains eighth-note chords. Bass clef contains eighth-note chords. Measure 9 has a repeat sign.

10

Measures 10-12: Treble clef contains eighth-note chords. Bass clef contains eighth-note chords. Measure 12 has a repeat sign.

13

Measures 13-15: Treble clef contains eighth-note chords. Bass clef contains eighth-note chords.

16

Measures 16-18 of a musical score in E-flat major (three flats). The piece is in 4/4 time. Measure 16 features a treble staff with a half note chord (F4, A-flat4, C5) and a bass staff with a half note chord (B-flat3, D4, F4). Measure 17 begins with a forte (*f*) dynamic. The treble staff has a half note chord (F4, A-flat4, C5) followed by a half note chord (F4, A-flat4, C5). The bass staff has a half note chord (B-flat3, D4, F4) followed by a half note chord (B-flat3, D4, F4). Measure 18 continues with the same chords in the treble and a half note chord (B-flat3, D4, F4) in the bass.

19

Measures 19-21 of a musical score in E-flat major (three flats). The piece is in 4/4 time. Measure 19 features a treble staff with a half note chord (F4, A-flat4, C5) and a bass staff with a half note chord (B-flat3, D4, F4). Measure 20 continues with the same chords in the treble and a half note chord (B-flat3, D4, F4) in the bass. Measure 21 begins with a mezzo-forte (*mf*) dynamic. The treble staff has a half note chord (F4, A-flat4, C5) followed by a half note chord (F4, A-flat4, C5). The bass staff has a half note chord (B-flat3, D4, F4) followed by a half note chord (B-flat3, D4, F4).

22

Measures 22-24 of a musical score in E-flat major (three flats). The piece is in 4/4 time. Measure 22 features a treble staff with a half note chord (F4, A-flat4, C5) and a bass staff with a half note chord (B-flat3, D4, F4). Measure 23 continues with the same chords in the treble and a half note chord (B-flat3, D4, F4) in the bass. Measure 24 features a treble staff with a half note chord (F4, A-flat4, C5) and a bass staff with a half note chord (B-flat3, D4, F4).

25

Measures 25-27 of a musical score in E-flat major (three flats). The piece is in 4/4 time. Measure 25 features a treble staff with a half note chord (F4, A-flat4, C5) and a bass staff with a half note chord (B-flat3, D4, F4). Measure 26 continues with the same chords in the treble and a half note chord (B-flat3, D4, F4) in the bass. Measure 27 features a treble staff with a half note chord (F4, A-flat4, C5) and a bass staff with a half note chord (B-flat3, D4, F4).

28

Measures 28-30 of a musical score in E-flat major (three flats). The piece is in 4/4 time. Measure 28 features a treble staff with a half note chord (F4, A-flat4, C5) and a bass staff with a half note chord (B-flat3, D4, F4). Measure 29 continues with the same chords in the treble and a half note chord (B-flat3, D4, F4) in the bass. Measure 30 features a treble staff with a half note chord (F4, A-flat4, C5) and a bass staff with a half note chord (B-flat3, D4, F4).

31

Measures 31-33 of a musical score. The key signature has five flats (B-flat, E-flat, A-flat, D-flat, G-flat). The melody in the right hand features a half note chord in measure 31, followed by eighth notes in measure 32, and a half note chord in measure 33. The left hand plays a steady eighth-note accompaniment throughout these measures.

34

Measures 34-36 of a musical score. The key signature has five flats. The melody in the right hand consists of half-note chords in measures 34 and 35, followed by a half note and a quarter note in measure 36. The left hand continues with an eighth-note accompaniment. A *fff* (fortississimo) dynamic marking is present in measure 36.

37

Measures 37-39 of a musical score. The key signature has five flats. The melody in the right hand features a half note in measure 37, followed by eighth notes in measure 38, and a half note chord in measure 39. The left hand has a half rest in measure 37, followed by eighth notes in measures 38 and 39.

40

Measures 40-42 of a musical score. The key signature has five flats. The melody in the right hand consists of eighth-note chords in measure 40, followed by half-note chords in measures 41 and 42. The left hand plays a steady eighth-note accompaniment throughout these measures.

43

Measures 43-45 of a musical score. The key signature has five flats. The melody in the right hand features eighth-note chords in measure 43, followed by eighth notes in measure 44, and a half note chord in measure 45. The left hand continues with an eighth-note accompaniment.

46

Measures 46-48 of a musical score in E-flat major (three flats). The piece is in 3/4 time. Measure 46 features a treble staff with a half note chord (F4, A-flat4, C5) and a bass staff with a half note chord (B-flat3, D4, F4). Measure 47 has a treble staff with a half note chord (F4, A-flat4, C5) and a bass staff with a half note chord (B-flat3, D4, F4). Measure 48 has a treble staff with a half note chord (F4, A-flat4, C5) and a bass staff with a half note chord (B-flat3, D4, F4).

49

Measures 49-51 of a musical score in E-flat major (three flats). The piece is in 3/4 time. Measure 49 features a treble staff with a half note chord (F4, A-flat4, C5) and a bass staff with a half note chord (B-flat3, D4, F4). Measure 50 has a treble staff with a half note chord (F4, A-flat4, C5) and a bass staff with a half note chord (B-flat3, D4, F4). Measure 51 has a treble staff with a half note chord (F4, A-flat4, C5) and a bass staff with a half note chord (B-flat3, D4, F4). The dynamic marking *mf* is present in measure 49.

52

Measures 52-54 of a musical score in E-flat major (three flats). The piece is in 3/4 time. Measure 52 features a treble staff with a half note chord (F4, A-flat4, C5) and a bass staff with a half note chord (B-flat3, D4, F4). Measure 53 has a treble staff with a half note chord (F4, A-flat4, C5) and a bass staff with a half note chord (B-flat3, D4, F4). Measure 54 has a treble staff with a half note chord (F4, A-flat4, C5) and a bass staff with a half note chord (B-flat3, D4, F4).

55

Measures 55-57 of a musical score in E-flat major (three flats). The piece is in 3/4 time. Measure 55 features a treble staff with a half note chord (F4, A-flat4, C5) and a bass staff with a half note chord (B-flat3, D4, F4). Measure 56 has a treble staff with a half note chord (F4, A-flat4, C5) and a bass staff with a half note chord (B-flat3, D4, F4). Measure 57 has a treble staff with a half note chord (F4, A-flat4, C5) and a bass staff with a half note chord (B-flat3, D4, F4).

58

Measures 58-60 of a musical score in E-flat major (three flats). The piece is in 3/4 time. Measure 58 features a treble staff with a half note chord (F4, A-flat4, C5) and a bass staff with a half note chord (B-flat3, D4, F4). Measure 59 has a treble staff with a half note chord (F4, A-flat4, C5) and a bass staff with a half note chord (B-flat3, D4, F4). Measure 60 has a treble staff with a half note chord (F4, A-flat4, C5) and a bass staff with a half note chord (B-flat3, D4, F4).

61

Measures 61-63 of a musical score. The key signature is E-flat major (three flats). The melody in the right hand consists of eighth and quarter notes, while the left hand plays a steady eighth-note accompaniment. Measure 63 ends with a double bar line.

64

Measures 64-66 of a musical score. Measure 64 features a *fff* (fortissimo) dynamic marking. The right hand has a half-note chord in measure 64, followed by eighth notes in measures 65 and 66. The left hand continues with eighth notes. Measure 66 ends with a double bar line.

67

Measures 67-69 of a musical score. The right hand features a continuous eighth-note melody. The left hand plays a steady eighth-note accompaniment. Measure 69 ends with a double bar line.

70

Measures 70-72 of a musical score. The right hand has a melody of eighth and quarter notes. The left hand plays a steady eighth-note accompaniment. Measure 72 ends with a double bar line.

73

Measures 73-75 of a musical score. The right hand features a melody with half-note chords and eighth notes. The left hand plays a steady eighth-note accompaniment. Measure 75 ends with a double bar line.

76

Measures 76-78 of a musical score in E-flat major (three flats). The right hand features a series of sustained chords, mostly triads and dyads, with some moving lines. The left hand plays a steady eighth-note accompaniment. Measure 78 ends with a repeat sign.

79

Measures 79-81. Measure 79 includes a mezzo-piano (*mp*) dynamic marking. The right hand continues with sustained chords, while the left hand maintains the eighth-note accompaniment. Measure 81 ends with a repeat sign.

82

Measures 82-84. Measure 82 begins with a repeat sign. The right hand has sustained chords, and the left hand continues the eighth-note accompaniment. Measure 84 ends with a repeat sign.

85

Measures 85-87. Measure 85 starts with a repeat sign. The right hand features sustained chords, and the left hand continues the eighth-note accompaniment. Measure 87 ends with a repeat sign.

88

Measures 88-90. Measure 88 includes a mezzo-forte (*mf*) dynamic marking. The right hand has sustained chords, and the left hand continues the eighth-note accompaniment. Measure 90 ends with a repeat sign.

91

Measures 91-93 of a musical score. The key signature has five flats (B-flat, E-flat, A-flat, D-flat, G-flat). The melody in the right hand features a series of chords and a final eighth-note chord. The bass line consists of a steady eighth-note accompaniment. Measure 93 includes a fermata over a chord in the right hand.

94

Measures 94-96 of a musical score. Measure 94 continues the eighth-note bass line and features a fermata in the right hand. Measure 95 has a fermata in the right hand. Measure 96 begins with a forte (*f*) dynamic and features a fermata in the right hand, with a measure rest in the bass line.

97

Measures 97-100 of a musical score. Measures 97-99 feature a complex melody in the right hand with many beamed eighth and sixteenth notes, while the bass line continues with eighth notes. Measure 100 has a fermata in the right hand.

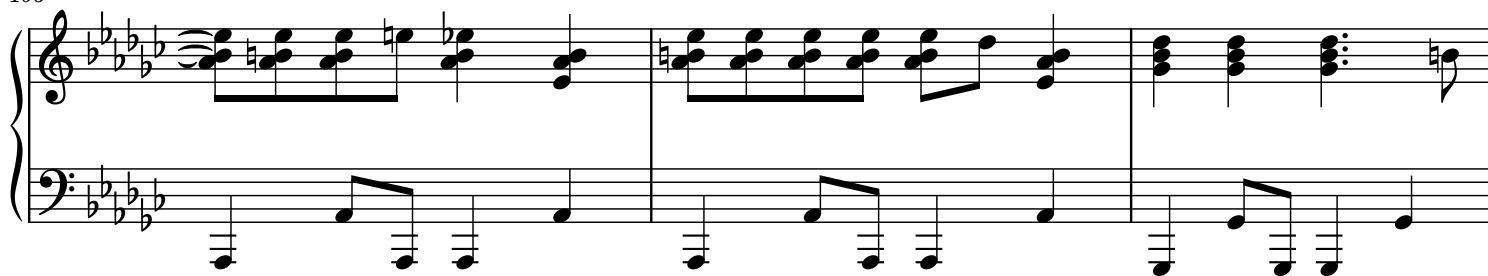
100

Measures 100-102 of a musical score. Measures 100-101 feature a melody in the right hand with beamed eighth and sixteenth notes. Measure 102 has a fermata in the right hand. The bass line continues with eighth notes throughout.

103

Measures 103-105 of a musical score. Measure 103 starts with a piano (*pp*) dynamic and features a melody in the right hand with beamed eighth and sixteenth notes, including a measure rest. Measure 104 has a measure rest in the right hand. Measure 105 begins with a fortissimo (*fff*) dynamic and features a melody in the right hand with beamed eighth and sixteenth notes. The bass line continues with eighth notes.

106



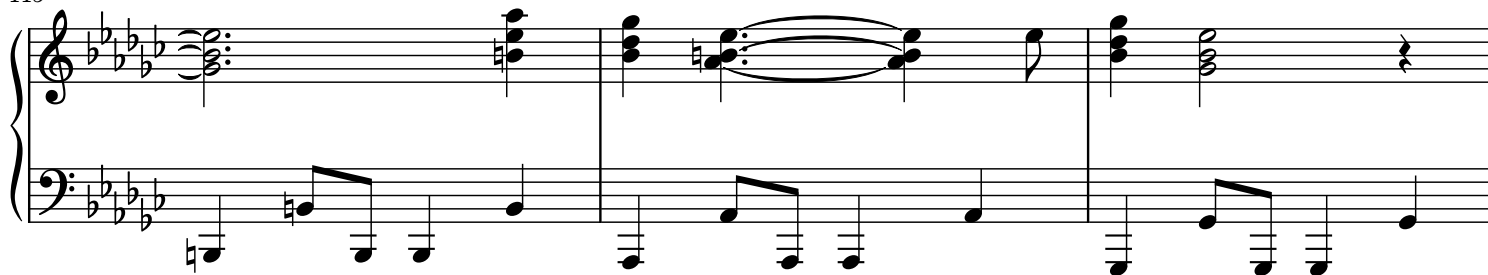
109



112



115



118

